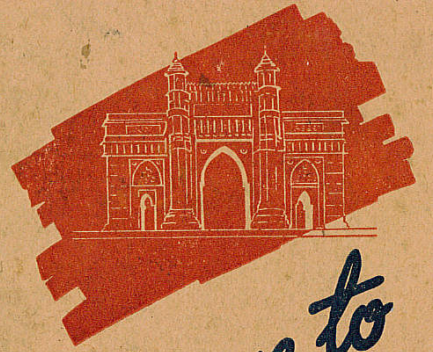


Notes

Handwritten notes in a grid format, including numbers and symbols.

12.50



Welcome to
Bombay

V...
FOR VICTORY



Take the tip...
 LOOK OUT FOR A
 "WEST END" WATCH
 THE BEST FOR YOU!



15
 JEWELS

WEST END WATCH CO
 49, Esplanade (Nr. Flora Fountain) Bombay.
 16, Old Court House Street, Calcutta.

Profusely Illustrated Catalogue FREE on demand

GOVERNMENT HOUSE
 BOMBAY

We want to make your
 stay as happy and
 comfortable as possible so
 that you will carry away
 pleasant memories of
 Bombay

Katharine Lumley
 President of the Hospitality Com.



WELCOME TO BOMBAY

BOMBAY'S citizens are very anxious to ensure that you enjoy yourselves, so that when you move on you will have the happiest memories of their city.

AVOID

Exposure of your head to sun before 4 p.m.; eating over-ripe fruit or fruits not protected by skin; drinking water from a street fountain; walking bare-footed; drinking intoxicating drinks during the day, especially spirits; soft drinks from marble-stoppered bottles; patronizing beggars, mendicants, fortune-tellers and curio dealers.

SERVICE ORGANISATIONS

Freemasonry: Headquarters: Masonic Hall, Ravelin Street, Fort: generally meet nightly at 7 p.m. Details can be obtained from the Services Canteen, or Hospitality Committee's Tent, Reinforcement Camp.

Rotary Club of Bombay: Taj Mahal Hotel. Meeting every Tuesday at 1 p.m. at Green's Hotel.

**CANTEENS,
INSTITUTES, ETC.**



(Light Refreshments and
Meals at Canteen Prices.)

Jehangir Building (Ground and 1st
Floors), Esplanade Road, opposite
Clock Tower: Open from 5 p.m. to
9 p.m. daily.

Salvation Army, Red Shield Hostel,
Corner of Ormiston and Merewether
Roads (near Taj Mahal Hotel): Rest,
Reading, Writing, Games, Refresh-
ments. Open daily till 10 p.m.

Scots Kirk Hall, Waudby Road :
Reading and Writing. Indoor Games.
Open from 10 a.m. to 6 p.m. (except
Sundays).

Seamen's Institute, Nicol Road, Ballard
Estate (Sailors only): Dances and
Socials Wednesday and Friday
7-30 p.m. to 9-30 p.m.

Services Bath-Canteen, Ballard Pier:
Open from 7 a.m. to 6-30 p.m. daily.
Reading and Writing, Wash and
Brush-up, Free Showers, Soap and
Towel.

Green's—opposite the Gateway of
India—All Canteen Facilities. Reading
and Writing Rooms. Open 10 a.m. to
9-30 p.m.

Services Rest Room, Military Square
Lane: Library, Reading and Writing,
Refreshments. Open from 9 a.m. to
8-30 p.m. daily.

Shandy Tavern, Duncan Stratton Build-
ing, Old Custom House Road: Reading
and Writing. Refreshments. Ping-pong,
Darts and Billiards. Open from
9-30 a.m. to 10 p.m. daily.

Sir Alwyn Ezra Services Canteen, Town
Hall, Elphinstone Circle: Open all day.
Indoor Games, Reading, Writing,
Dancing on Tuesdays and Thursdays
at 7-30 p.m. Clean clothes mended free
and while you eat or see the Town.

Wesley House Institute, opposite Electric
House: Reading and Writing Tables,
Indoor Games. No Refreshments.
Special welcome on Wednesdays and
Sundays.

*For your
Photographic Needs*

You'll find plenty to photograph in Bombay ; and the same comfortable certainty of results on Kodak Film and Papers.



Look in at Kodak House, Hornby Road, or where this sign indicates an Authorised Kodak Dealer.

KODAK LIMITED (Incorporated in England)
BOMBAY - CALCUTTA - LAHORE - MADRAS



FLORA FOUNTAIN

**METHODIST
(GARRISON) CHURCH**

COLABA CAUSEWAY
(OPPOSITE ELECTRIC HOUSE)

Sunday Services

Morning 9-30. Evening 6.

•
WESLEY INSTITUTE

(Next door to the Church)

Recreation Hall.

Billiard Room and Rest Room.

Sleeping Accommodation.

All Servicemen are invited to the
Socials on

*Sundays and Wednesdays at
7 p.m.*

Space donated by Armstrong Smith Ltd.

CHURCHES

Afghan Memorial (C. of E.),
Colaba.

Bombay Baptist Church,
Colaba.



Bowen Methodist Episcopal Church,
Lansdowne Road.

Church of Scotland, Apollo Street.

Harbour Mission Church of St. Nicholas
attached to Seamen's Institute.

Holy Name Church (R. C.), Wodehouse
Road.

Methodist (Garrison Church), Colaba
Causeway, opposite Electric House.

St. Thomas' Cathedral (C. of E.),
Churchgate Street.

SWIMMING BATHS



Back Bay Bath .. Back Bay Reclama-
tion.

Breach Candy
(Europeans only).. Warden Road.

Golwala Bath .. Back Bay Reclama-
tion.

It is dangerous to swim in the sea during
the months June to September.

Eros

Cinema

(OPP. CHURCHGATE STATION)

The Rendezvous Of The Smart Set

Offers You First
Rate Film Fare.

Daily at 3-30, 6-30 and 9-30 p.m.

You can get there from Colaba and Museum by Bus "B" and "C" and from Ballard Estate by Bus "B".

Special Buses provided for patrons after the last show.

10

CINEMAS



- *Capitol } Near Victoria Terminus Station.
- *Empire } Station.
- *Excelsior } Station.
- Daily at 4, 6-30 and 9-30 p.m.
- Eros . . . Near Churchgate Station.
- Daily at 3-30, 6-30 and 9-30 p.m.
- Garrison . . . Colaba Barracks.
- Daily at 6-45 and 9-30 p.m.
- *Metro . . . Dhobi Talao.
- Daily at 3-30, 6-30 and 9-30 p.m.
- *Regal . . . Near Museum.
- Daily at 4, 6-30 and 9-30 p.m.
- St. Xavier's . Cruickshank Road.
- Shows specially arranged.

* Sailors and Soldiers in uniform are admitted at concession rates from Mondays to Fridays.

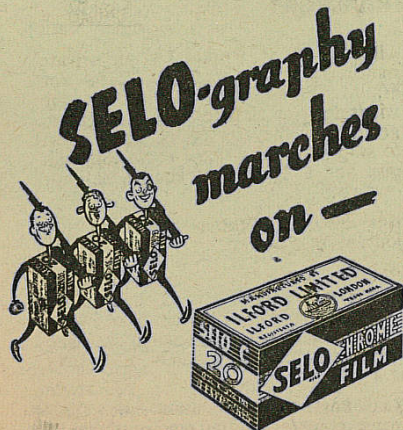
INDIAN MONEY



The Rupee, a silver coin about the size of a florin, is worth approximately 1s. 11d. Australian; 1s. 6d. sterling. There are sixteen annas, a scalloped nickel coin half an inch in diameter, in the rupee. Roughly speaking, the anna may be considered equal to 1½ pence Australian or 1½ pence sterling.

11

FRESH SELO films are still coming to India and prices remain the same. Try one of these: SELO (Ortho)—SELOCHROME SELO F.P.—SELO H.P. 3



Distributed throughout India by
ILFORD-SELO (INDIA) LIMITED
BOMBAY-CALCUTTA-MADRAS-LAHORE

Don't accept a rupee coin with Queen Victoria or King Edward's face on it. Always test your rupees by ringing them on a hard surface when they should give a high clear tone.

TRANSPORT



Lifts for H. M. Forces. Certain private motor cars are marked "Lifts for H. M. Forces," by a card on the windscreen or radiator. If you want to go the way they are going, signal them to stop and if they have room they will give you a lift free of charge, at your own risk.

Bus fares are about one anna per journey of 2 miles.

Gharries: Basic fare is 4 annas for short distances of, say, $\frac{1}{2}$ or $\frac{3}{4}$ mile. It is better to arrange with the gharrywalla an inclusive rate to destination. The maximum number a gharry may carry is 4 persons.

Taxi Fares: Eight annas a mile. Taximeter registers at the rate of 6 annas per mile and therefore must be increased proportionately. (See card carried by taxi-drivers.)



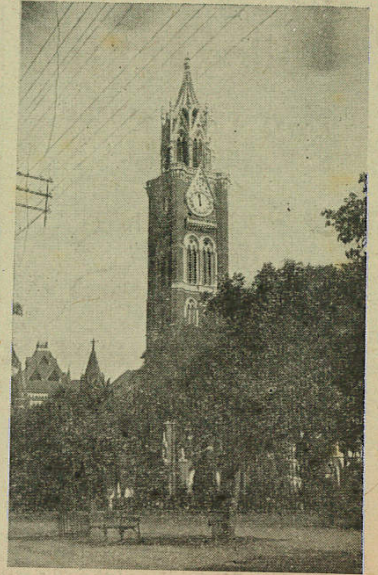
THE ARMY
THE NAVY
&
THE AIR FORCE

Shop at
The
**BOMBAY STATIONERY
MART**

for all their
DRAWING OFFICE
REQUIREMENTS &
STATIONERY

7A, SIR PHIROZSHAW MEHTA RD.
BOMBAY
PHONE: 20145

14



RAJABAI TOWER

15

EDSU-FABRICS

Have ready stocks
of

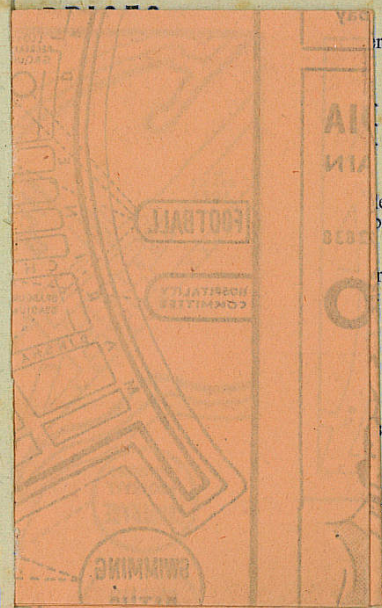
Khaki Shirts

Khaki Shorts

Khaki Kerchiefs

Address:—Forbes Street,
Opp. Greaves Cotton & Co., Ltd.

Please refer to the map in the centre
of this booklet on "How to find us."



Rs. 3 per dozen.

AN INVALUABLE SOUVENIR!
AN IDEAL GIFT!

PICTORIAL BOMBAY

48 Unique Photographs with Highly Attractive Letterpress

By E. N. SCHAEFFER

Rs. 2-8

★
For Anything You Want
in
BOOKS, STATIONERY AND
PERIODICALS

Call straight on us or write to

THE NEW BOOK CO.

188-190, Hornby Road, Bombay

KOPARDE & WADIA
NEAR FLORA FOUNTAIN
BOMBAY

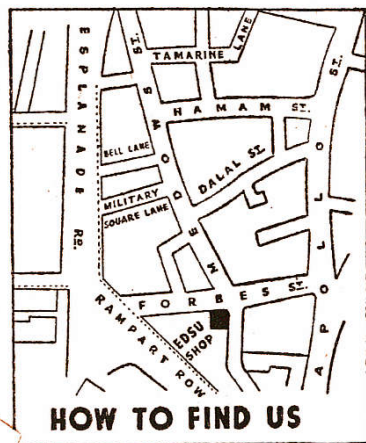
Telephone: 22838

PHOTO

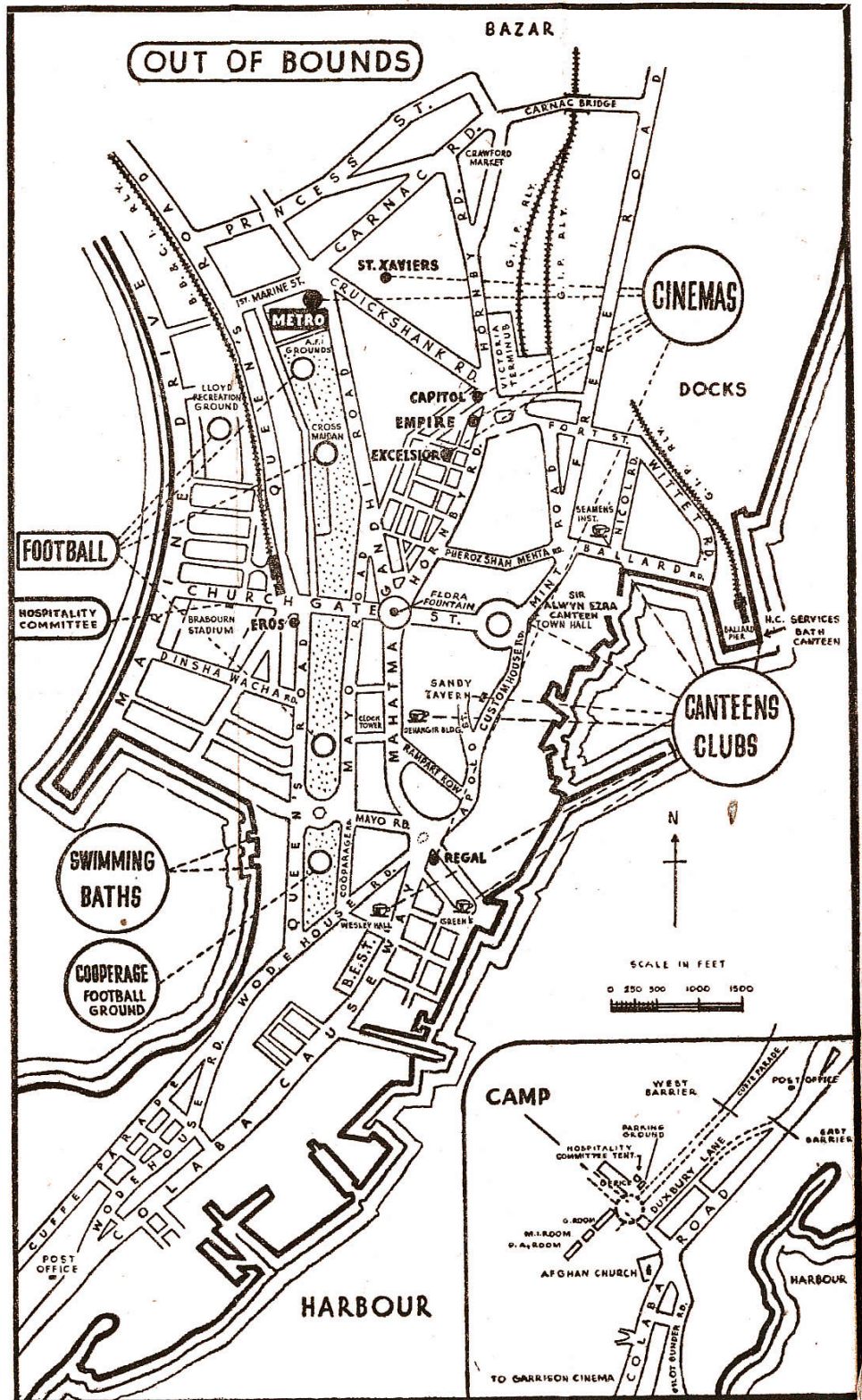
DEVELOPING
PRINTING
ENLARGING

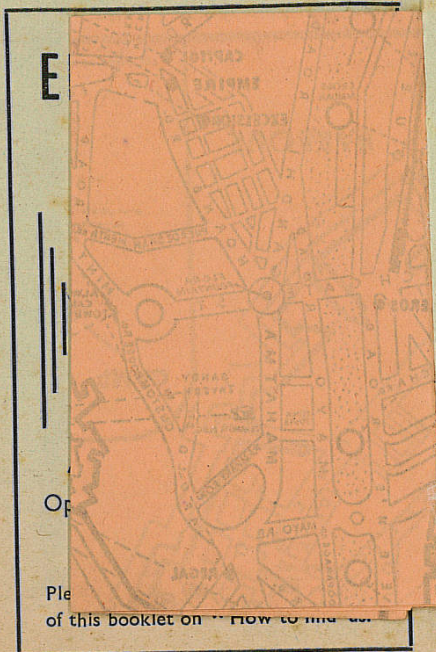
•
CAMERAS
FILMS, ETC.
CAMERA
REPAIRS

•
MODERATE
RATE



MAP OF BOMBAY SHOWING PLACES OF INTEREST AND ENTERTAINMENTS





PRICES

The following represent moderate Restaurant prices:—

Cigarettes—
Gold Flake .. As. 4½ pkt. of 10.
Player's Medium.. As. 3½ pkt. of 10.
Woodbine .. As. 2 pkt. of 10.

Drinks—
Drinks (sweet) .. As. 2 per bottle.
Tea 1 anna per cup.

Fruit—
Good apples may be bought from street hawkers at 3—4 annas each.
Bananas: 2 for an anna.
Sweet Limes: 1 anna each.
Oranges: 1½ annas each.
Tomatoes: 4 annas per lb.

Clothes—
Clothes are cheap. Average prices in Bombay are:—
Shirts, Khaki (half)—
Rs. 2-15.
For sizes above 16", 8 annas extra.
Shorts, Khaki Drill—
Rs. 3-14 with bands.
Rs. 3-10 without bands.
For sizes above 40", 8 annas extra.
Handkerchiefs—
Rs. 3 per dozen.

Green's Canteen Rates

	Per	Rs.	a.
Sweet Drinks and Sodas..	bot.	0	1
Orangeade or Lemon Squash	glass	0	6
Tea or Coffee	cup	0	1
Roll and Butter or Bread and Butter	portion	0	2
Plate of Sandwiches ..	4 pieces	0	3
Do.	8 "	0	6
Eggs and Bacon	} portion	0	8
Sausages and Mash ..			
Ham and Egg			
Fish and Chips With bread and butter.			
Chips and Nuts Free.			
Steak and Chips	} portion	0	12
Assorted Cold Meat and Salad			
With bread and butter.			
Ice Cream	"	0	4
Small Cakes	each	0	1
Gold Flake — Player's, De Reszke	packet	0	4
Billiards	hour	0	12

Curios : Before purchasing curios it is suggested that you see the curios exhibited in the Canteen at Jehangir Building. This will give you an idea of the correct prices, so that if you decide to go to the bazaar you will know what to pay; otherwise you may be badly stung.

PLACES OF INTEREST



If you are in Bombay for a few hours you ought to visit the following places :—

Name	Location
(a) Crawford Market and Bazaar ..	Hornby Road.
(b) Hanging Gardens (from where you get a first-rate view of Bombay) ..	Malabar Hill.
(c) Prince of Wales Museum	Esplanade Road.
(d) Victoria Gardens and Zoo	Byculla.

Bus Routes :—(a) A, F, D; (b) E, H; (c) A, B, C, D, H; (d) A, G.

Should you wish to visit Spinning and Weaving Mills or any particular factory

Whilst you are in Bombay, you can get all your medical and chemists' requirements from Kemp & Co., Ltd.

A day and night service is maintained and the qualified chemists on duty are fully conversant with the needs of members of His Majesty's Forces.

Remember the name and address: Kemp & Co., Ltd., Hornby Road, Bombay.

Local Branches at Cumballa Hill, Taj Mahal Hotel, Byculla and Parel.

Kemp & Co., Ltd., Manufacturing Chemists, Charni Road, Bombay.

or anything which is not specified here would you kindly communicate with the Hospitality Committee.

SIGHTSEEING



If you can make up a party, take a boat to Elephanta Caves or a BEST Bus out to Juhu.

Elephanta Caves: A temple cut in the rocks—By Bunder Boat from Gateway of India at a charge of Rs. 15 for a party of 15 men with 2 hours' waiting time.

Juhu: A palm-studded beach—good for bathing—Special Bus can be hired from BEST at Rs. 30 for a 36-seater bus including 3 hours' waiting time at Juhu.

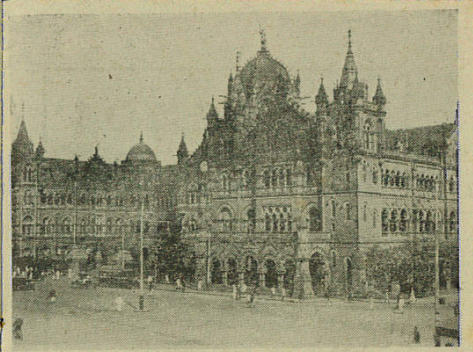
Should you care to make up a party of 36, i.e., one bus load, arrangements can be made for a 2 hours' bus ride at a charge of 8 annas per head.

For any further information please apply to the Hospitality Committee Office adjoining the Camp Commandant's Office or the Hospitality Committee Office at the Brabourne Stadium.

**ORMERODS
(INDIA) LIMITED**

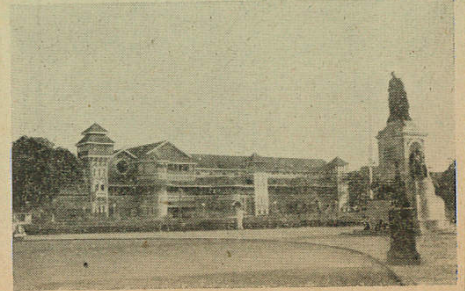
extend good wishes
to the Fighting
Forces and hope
this guide to the
City of Bombay will
be of service.

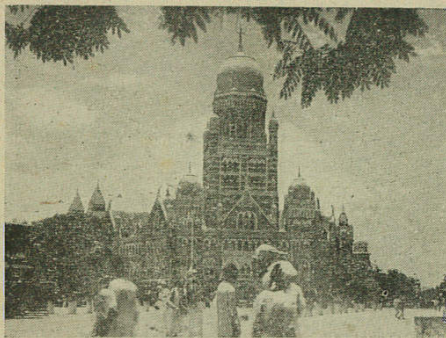
BANK OF BARODA BUILDING
Apollo Street
Fort
B O M B A Y
Telephone 27077



VICTORIA TERMINUS

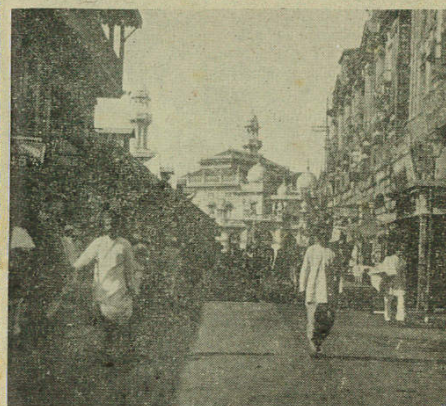
YACHT CLUB





MUNICIPAL BUILDING

Notes



JUMMA MASJID

Notes

LEVER BROTHERS
(INDIA) LIMITED

Welcome
you to
Bombay

Members of the Staffs of Unilever and Lever Brothers Ltd. and Associated Company at Home and Abroad who would like to make contact with their colleagues in India should ring us at Scindia House, telephone number 27291, and ask for extension 22.

26

And the same
goes for us!

Pears **Vinolia**
Eramic **Gibbs**

Scilma
John Knight

Rexona **Atkinsons**



TAJ MAHAL HOTEL

SIR C. J. HALL

